



FOR SALE

£160,000

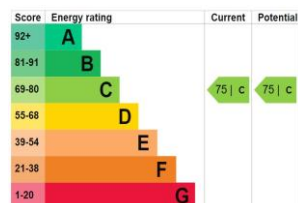
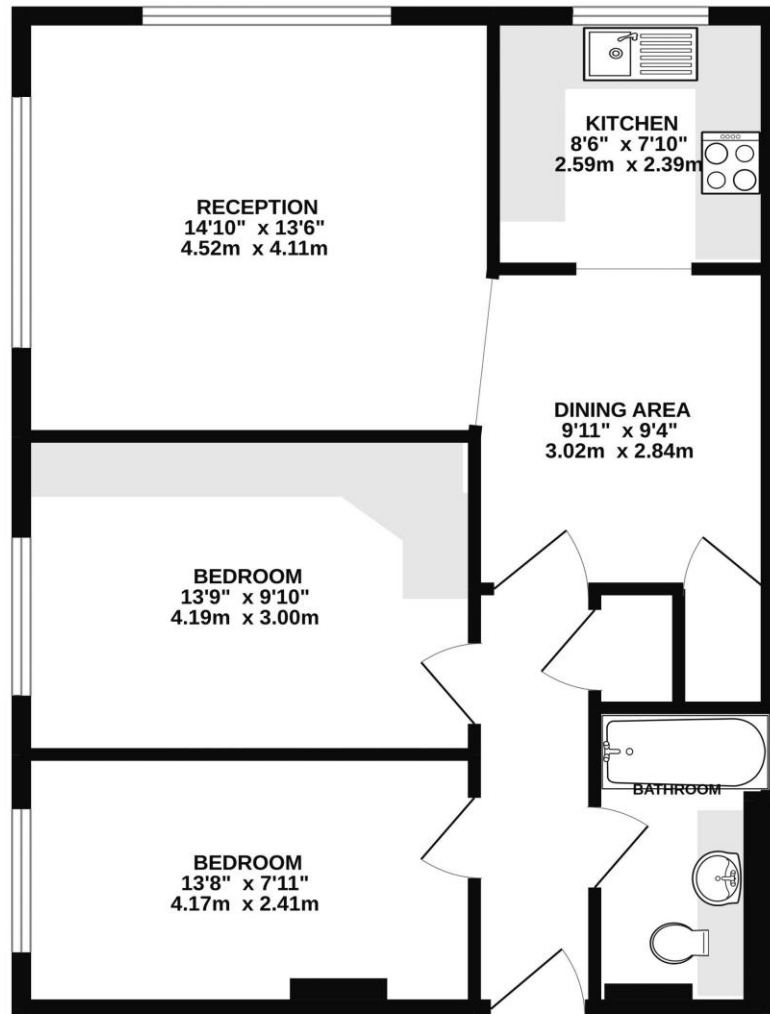
201 Medford House Clarendon Road,
Southsea, PO5 2LB.



ESTATE  AGENTS

**LAWSON
ROSE**

FIRST FLOOR APARTMENT



Whilst every attempt has been made to ensure the accuracy of the floorplan contained here, measurements of doors, windows, rooms and any other items are approximate and no responsibility is taken for any error, omission or mis-statement. This plan is for illustrative purposes only and should be used as such by any prospective purchaser. The services, systems and appliances shown have not been tested and no guarantee as to their operability or efficiency can be given.
Made with Metropix ©2022

£160,000

201 Medford House Clarendon Road, Southsea

Medford House is set in the heart of Southsea, just opposite Clarendon Road Green and within close proximity to local shops and the seafront. Offered with no forward chain, this sizable two-bedroom apartment provides two good sized double bedrooms, the master of which has an array of built-in wardrobes. There is a bright and airy open living space with a modern fitted kitchen, plus a good-sized stylish bathroom suite. Additionally, the apartment is double glazed, gas centrally heated, there are two built in cupboards providing plenty of storage plus there is a communal garden to enjoy. For further information or to arrange an internal viewing, please contact the Lawson Rose sales department.

Services

Electricity, gas, mains water and mains drainage are available. Please note that none of the services or appliances have been tested by Lawson Rose

Council Tax - Band B

Tenure - Leasehold Management company: Years on Lease: Maintenance Charges: Ground Rent:



02392 367 779 - contactus@lawsonrose.com

131 Winter Road, Southsea, P04 8DS



